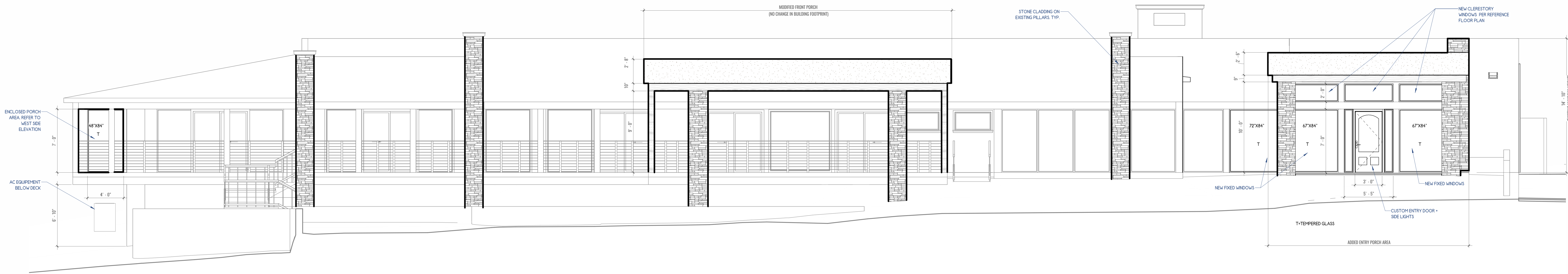


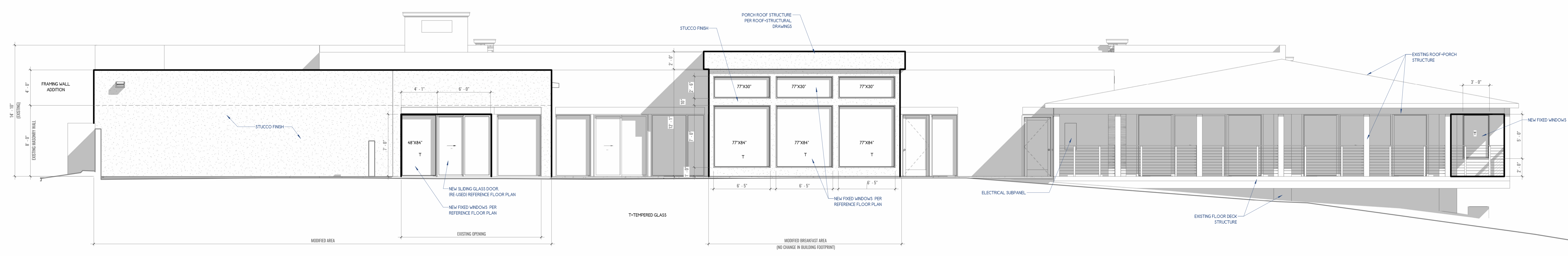
+ FLOOR PLAN SYMBOLS LEGEND

- EXISTING WALL
- EXTERIOR FRAMING WALL
• STUCCO FINISH OVER FOAM
- 2X WOOD STUDS WALL
- SWING DOOR
- EXTERIOR DOUBLE DOOR
- SLIDING CLOSET DOOR
- BI-FOLD DOOR
- POCKET DOOR
- SLIDING GLASS WINDOW
- WINDOW SINGLE HUNG
- COL
□ COLUMN/POST

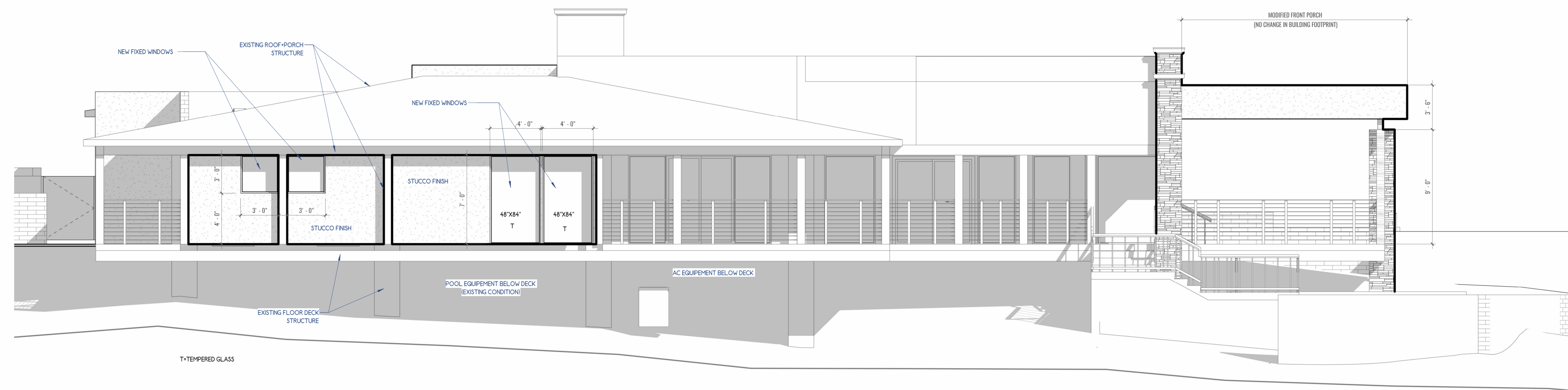
NOTE: SCREENED SYMBOLS/LINES ON PLAN INDICATE EXISTING



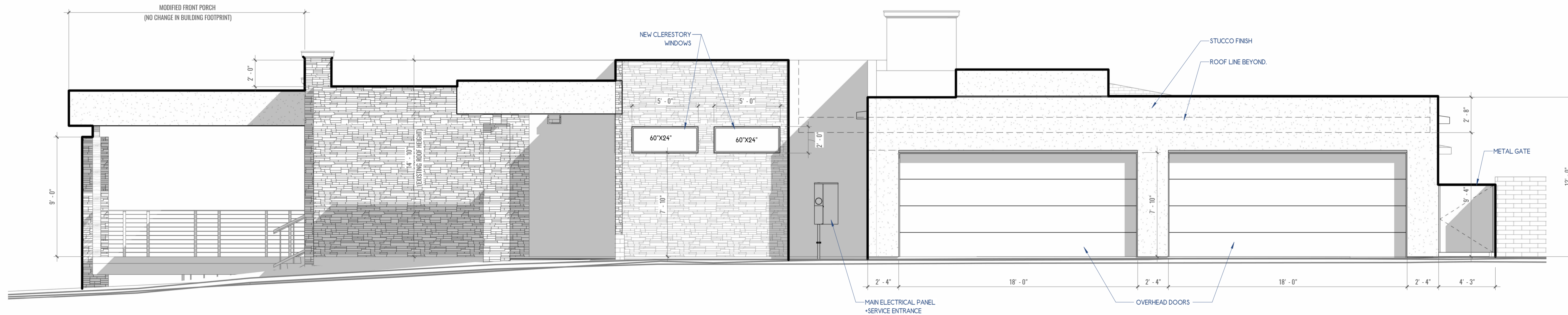
1 SOUTH ELEVATION VIEW
SCALE: 1/4" = 1'-0"



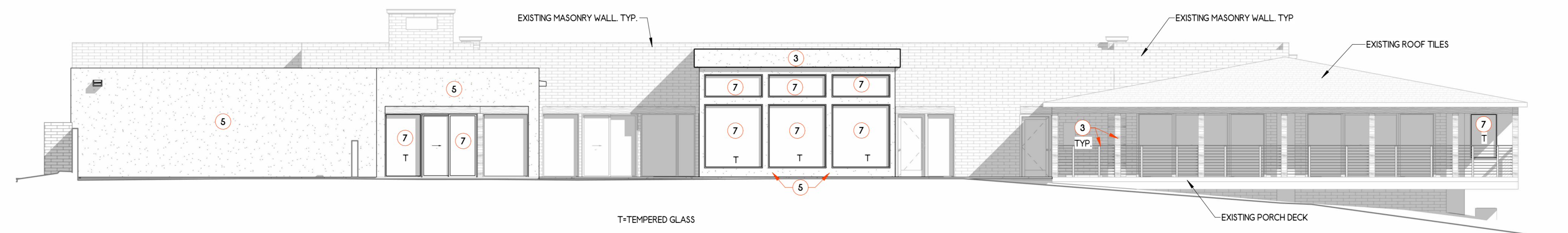
2 NORTH ELEVATION VIEW
SCALE: 1/4" = 1'-0"



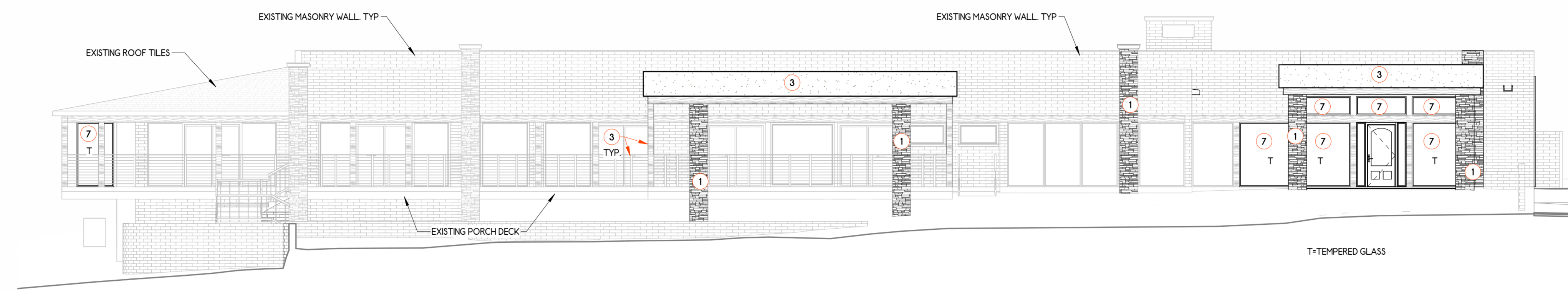
1 WEST ELEVATION VIEW
SCALE: 1/4" = 1'-0"



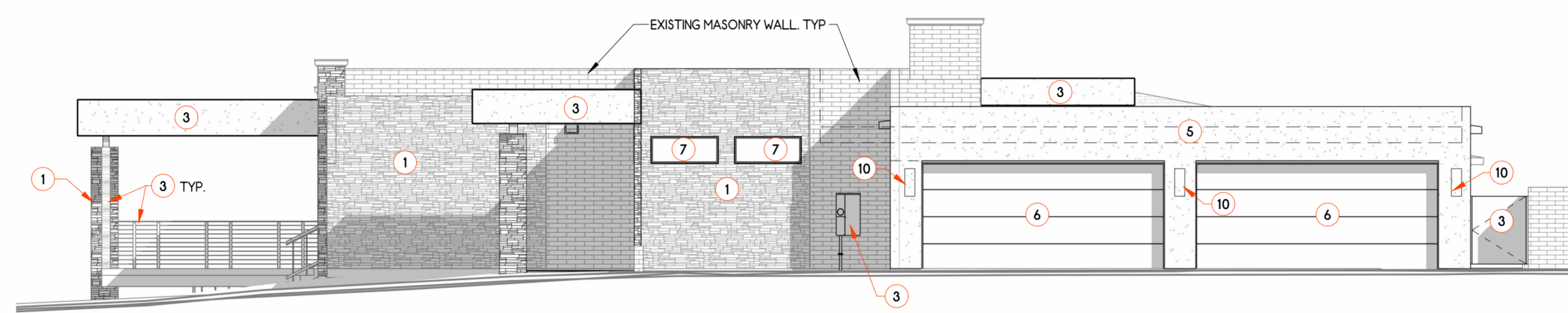
2 EAST ELEVATION VIEW
SCALE: 1/4" = 1'-0"



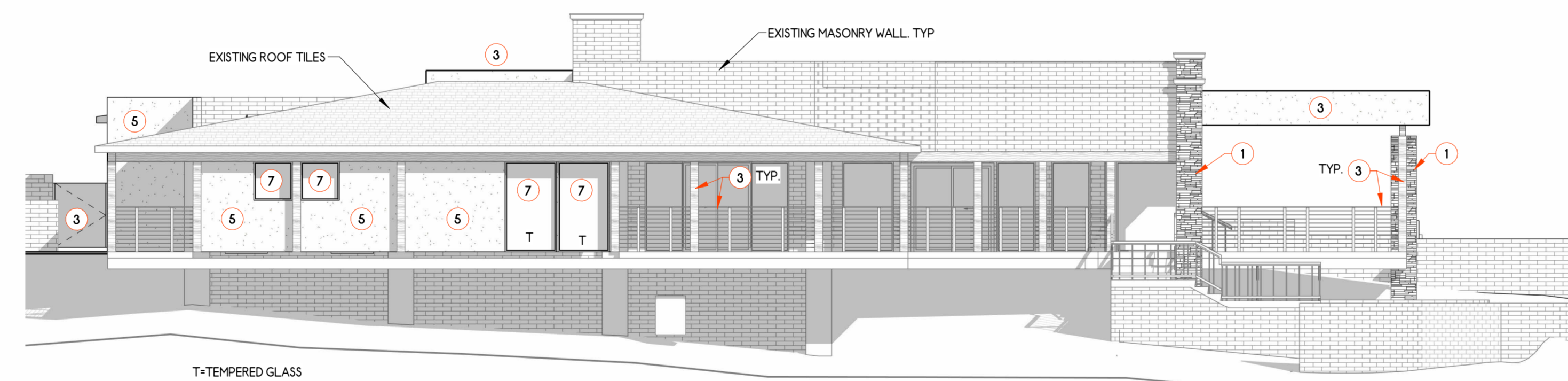
2 NORTH ELEVATION VIEW_FINISHES
SCALE: 1/8" = 1'-0"



4 SOUTH ELEVATION VIEW_FINISHES
SCALE: 1/8" = 1'-0"



1 EAST ELEVATION VIEW_FINISHES
SCALE: 1/8" = 1'-0"



3 WEST ELEVATION VIEW_FINISHES
SCALE: 1/8" = 1'-0"

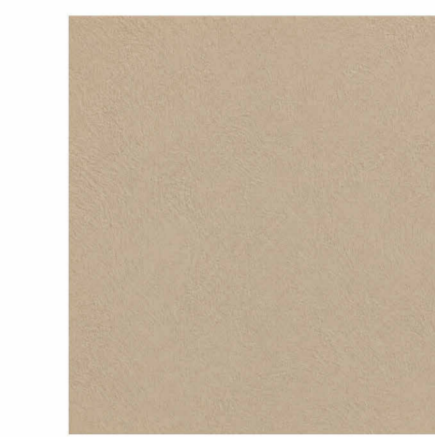
MATERIALS SCHEDULE					
#	ITEM/LOCATION	MATERIAL/FINISH	COLOR/PRODUCT	VISIBLE VALUE	NOTES
1	STONE VENEER	SLATE LEDGER PANEL	YUON STACK SLATE LEDGER PANEL		
2	PAINT	POWDER-COATED STEEL / ALUMINUM	DARK BRONZE	LRV 18%	
3	PAINT	PAINT COLOR	SHERWIN-WILLIAMS EDVE	LRV 6%	
4	DOOR AND WINDOW FRAMES	HE-ANODIZED EXTRUSION WINDOOR/DOORS ALUMINUM CLAD	DARK BRONZE	LRV 18%	
5	EXTERIOR PAINT	STEEL TROWELED STUCCO	SHERWIN-WILLIAMS SAND BEACH	LRV 67%	
6	GARAGE DOORS	MODERN STEEL WOOD-LOOK GARAGE DOOR	ULTRA GRAY PLANK BARNWOOD		SEE SAMPLE SHOW ON PAGE
7	WINDOW GLASS	GLAZ-TECH INSULATED GLASS	RLE 70/36 ON CLEAR	SPGL 2.0; SHWING COEFFICIENT 0.44	VISIBLE TRANSMITTANCE 70%; SEE GLAZ SPECS
8	POOL LEDGE	TRAVERTINE	HORY TRAVERTINE	LRV 64%	
9	POOL FINISH	PEBBLESHEEN POOL INTERIOR FINISH	WHITE DIAMONDS	LRV 44.6% MET / 33.7% DRY	
10	EXTERIOR WALL LIGHT	LED OUTDOOR WALL LANTERN	EARTHBLACK FINISH / WESTOVER COLLECTION		CLEAR REVEALED GLASS, 1/4" LED SHOW ON CUT SHEET



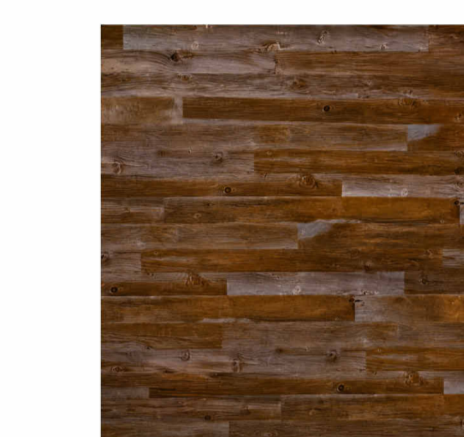
1 SLATE LEDGER PANEL



2 PAINT COLOR



5 STEEL TROWELED STUCCO



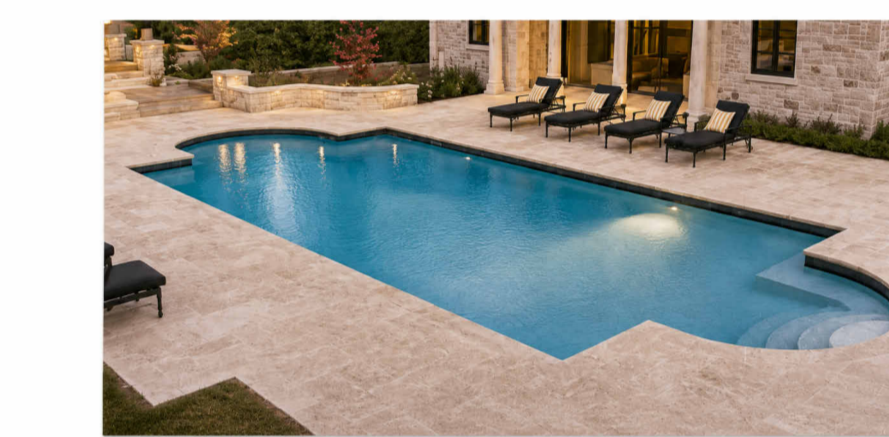
6 MODERN STEEL WOOD-LOOK GARAGE DOOR



8 POOL LEDGE TRAVERTINE



9 PEBBLESHEEN POOL INTERIOR FINISH



GLAZ-TECH INDUSTRIES
DESIGN THROUGH GLASS

RLE 70/36 on Clear
1/8" RLE 70/36 (3mm) | 1/2" A.S. (12.7mm) | 1/8 (3mm) Clear

Transmittance (%)
Visible = 70 | UV = 24 | Total Solar Energy = 36

Reflectance (%)
Visible (Out) = 11 | Visible (In) = 13 | Total Solar Energy (Out) = 38

U-Values
Winter Night = .295 | Summer Day = .276

Shading Coefficient = 0.44
Solar Heat Gain Coefficient = 0.39

GLAZ SPECS

7 GLAZ-TECH INSULATED GLASS

LED Outdoor Wall Lantern

Comment: QUONZIL WESTOVER

SALE

Item ID: 8140741
MFG #: WWR8070K
Finish: Earth Black
Collection: Westover
Width: 7.80"
Height: 20.00"
Length: 8.50"

LED

The sleek lines and hand-mixed accents make the Westover outdoor wall lantern a modern, understated design. A long rectangular frame provides an unobstructed view of the lantern's sleek interior - highlighted by an earth black finish and clear tempered glass. The outdoor wall lantern comes with an optional clear, frosted glass, providing full color illumination. By inserting the shade over the bulb socket, light is directed downward, minimizing light pollution and preserving the night sky.

Bulbs

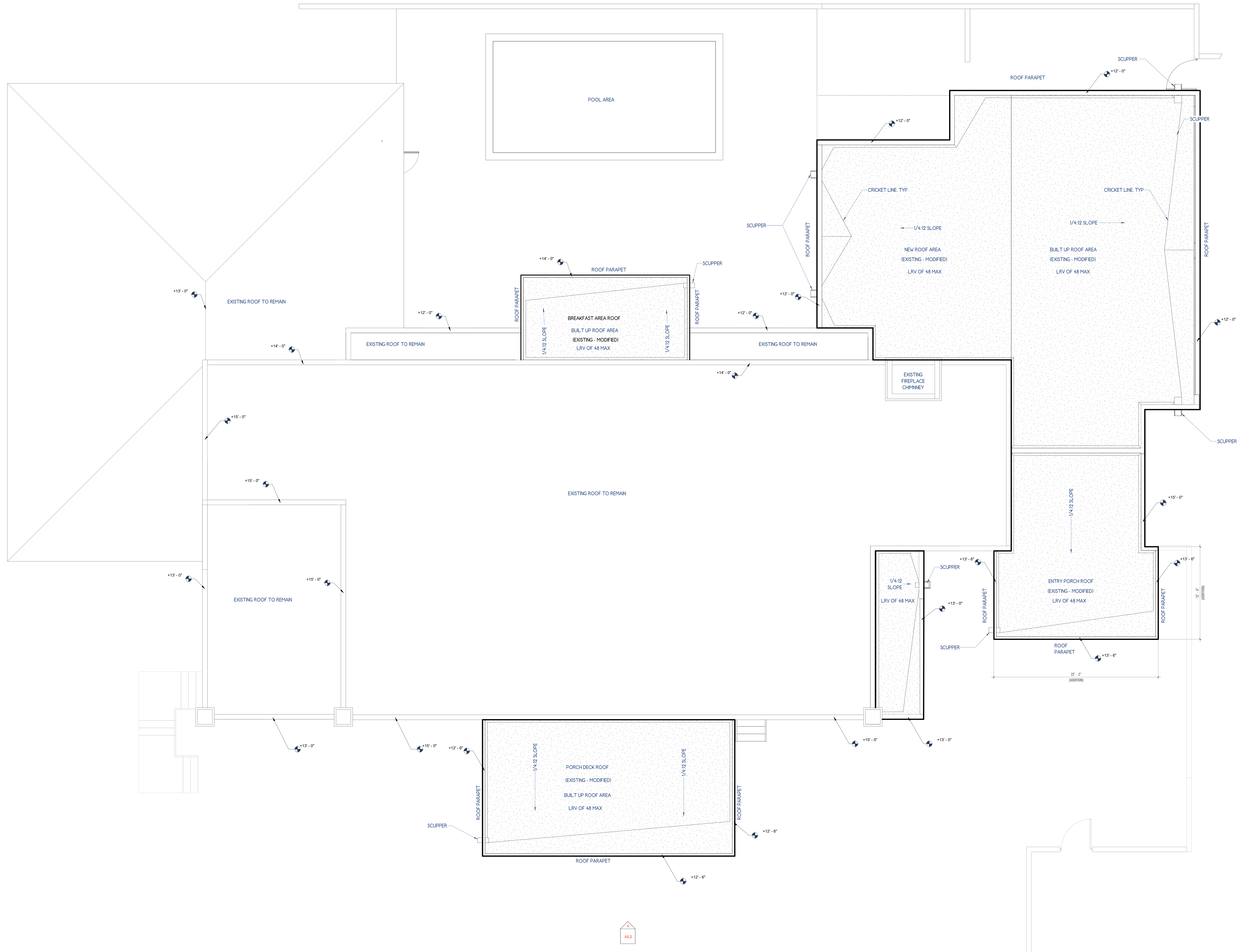
Quantity: 1
Type: A19
Base: Medium
Watt: 15.00 W
Incl: LED
Source: LED
LM: CCT
CRI: AvgLife
Dim: Yes
Beam: Yes

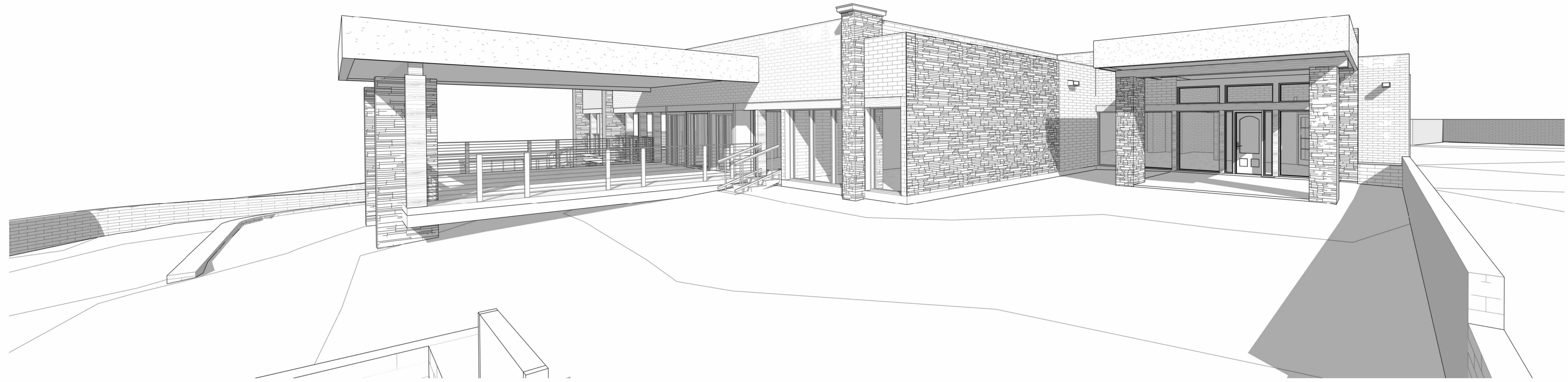
Details

Safety Listing: ETL
Glass: Clear-Tempered Glass
Comp: 4.000" x .000"
Wt: 6.00"
Explosion: 8.00"
Height: 8.50"

Connection: NEMA6P
UPC: 817203027

10 LED OUTDOOR WALL LANTERN



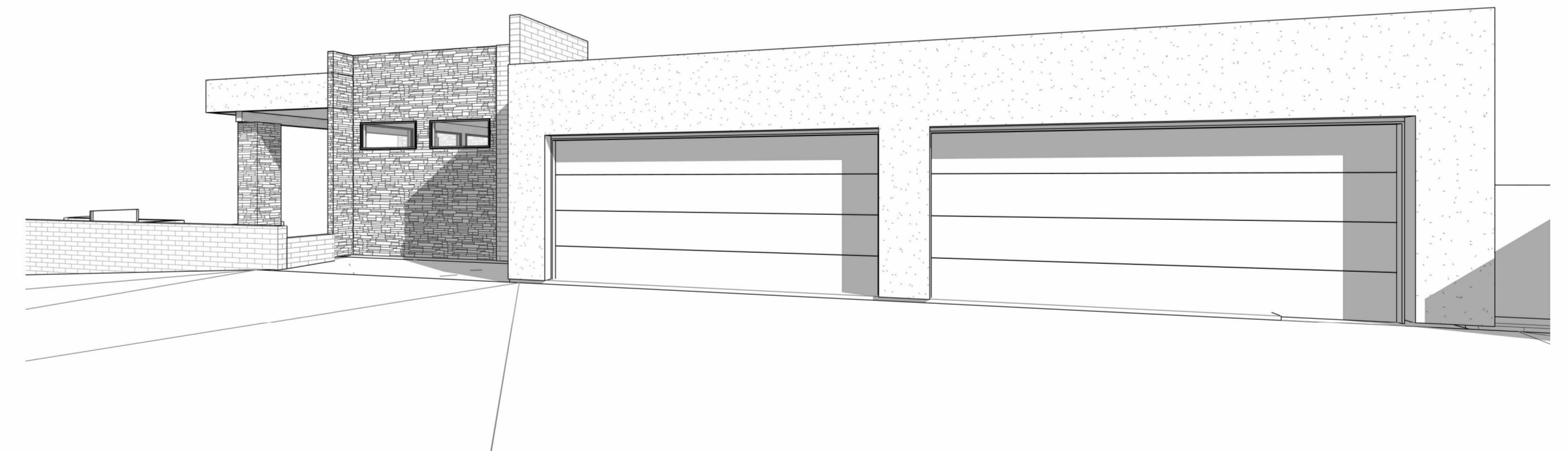


1 3D View A
SCALE:

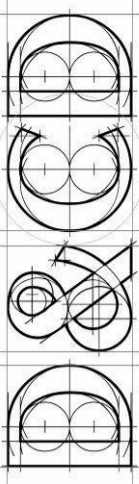
*VIEWS FOR GENERAL ILLUSTRATION PURPOSES ONLY. REFER TO ELEVATIONS FOR NOTATIONS



3 3D View C
SCALE:



2 3D View B
SCALE:



Revisions

6.4.2026

The REMODELING AT SAFDAR RESIDENCE
7401 N. Cobblestone Rd., Tucson, AZ 85718

Project No.
Scale

PROJECT NORTH



VIEWS

A4.0

Sheet No.

©2026